





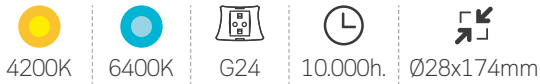
## **22. BAJO CONSUMO**



### Lámpara PLC



Casquillo: G24d-3-2pin. 230V.

Referencia	Potencia	Lúmenes	Luz	Embalaje	Cod. EAN
2000608	26W	1716Lm	● 4200K	25/200	
2000840	26W	1716Lm	● 6400K	25/200	



### Lámpara PLC

Casquillo: G24d-4pin. 230V.

Referencia	Potencia	Lúmenes	Luz	Embalaje	Cod. EAN
2000308	26W	1716Lm	● 4200K	25/200	
2003315	26W	1716Lm	● 6400K	25/200	

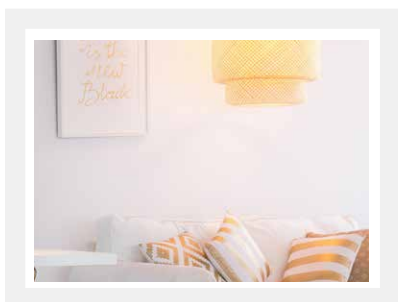


### Lámpara PLC

Casquillo: G23-2pin. 230V.

Referencia	Potencia	Lúmenes	Luz	Embalaje	Cod. EAN
2000609	9W	583Lm	● 4200K	25/200	
2000610	11W	897Lm	● 4200K	25/200	





### Lámpara PLS

Casquillo: 2G7. 230V.

Referencia	Potencia	Lúmenes	Luz	Embalaje	Cod. EAN
2001167	9W	583Lm	● 4200K	25/200	8 433373 011670
2001168	11W	897Lm	● 4200K	25/200	8 433373 011687



9W



11W



2G7



10.000h.



Ø11x145mm



Ø11x210mm



### Lámpara PL

Casquillo: 2G11. 230V.

Referencia	Potencia	Lúmenes	Luz	Embalaje	Cod. EAN
2000611	36W	2916Lm	● 4200K	10/50	8 436021 946119
2000638	55W	4510Lm	● 4200K	10/50	8 436021 946386



36W



55W



2G11



10.000h.



Ø40x415mm



Ø40x535mm